

ATELIER



Reinhard Winter: Sculptor of passion

1988 Higher School Certificate (Vienna, TGM, Technical Engineering), Qualification Stone Engraving.
1996 **Master Craftsman's examination sculptor**, then working self employed. Commissioned works - among others for Prof. Ferdinand Welz and Prof. Josef Pillhofer.
1999 **Master Craftsman's examination stonemason**.
2006 **Foundation of the arteum - center for sculpting**.
2015 Opening of arteum-gallery and sculpture garden.
2003 - 2020 Member of the Austrian master craftsman's examining board for sculptors, since 2007 member of the artist's association of Austrian sculptors.

Design Awards:

"Austrian Design-Award Natural Stone" 2018
"Austrian sepulchral monument prize" 2018 and 2020

Permanent exhibition on more than 600 m²:

The Art of Sculpting RW in the arteum-gallery and the sculpture garden. **Visits and personal tours anytime by arrangement.**

Commissional work in stone and metal:

Sculptural perfection from 4 grams to 4 tons.

Sculptures, Reliefs, Award-Design, Monuments and more.
Unique items, small batch series, cast models, prototypes.
Design, planning, submission, model, installation.

Artistic realization in precious materials:

Natural Stone: Sandstone, Limestone, Marble, Granite.
Cast Metal: Bronze, Brass, Silver, Aluminium.

ATELIER

Sculptor's Enterprise
Gallery & Sculpture Garden

arteum - Reinhard Winter e. U.
Schultheßgasse 8
A-1170 Vienna / Austria

Ph: +43 676 635 05 04

E: winter-design@arteum.at

I: www.winter-design.at

f: [bildhauer.reinhardwinter](https://www.facebook.com/bildhauer.reinhardwinter)

ig: [bildhauer_reinhard_winter](https://www.instagram.com/bildhauer_reinhard_winter)

Opening Hours:

By arrangement.



BILDHAUERMEISTER
since 1996



www.winter-design.at



STEINMETZMEISTER
since 1999



Gallery

Sculpture garden I

Sculpture garden II



ATELIER

THE ART OF SCULPTING



25 YEARS ART OF SCULPTING RW

Reinhard Winter

Sculptor | Vienna | Austria



www.winter-design.at

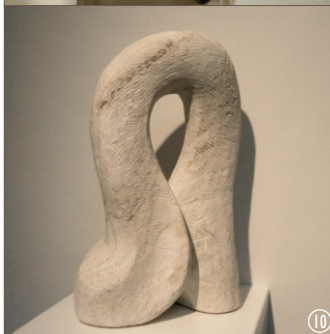
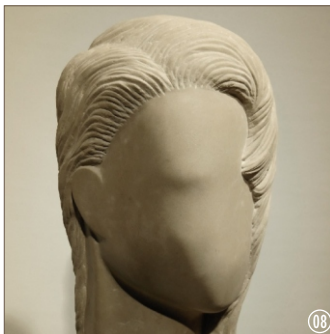
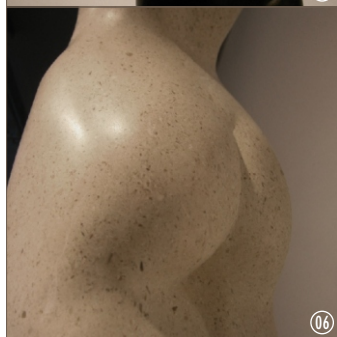
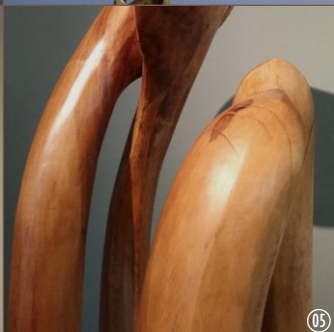
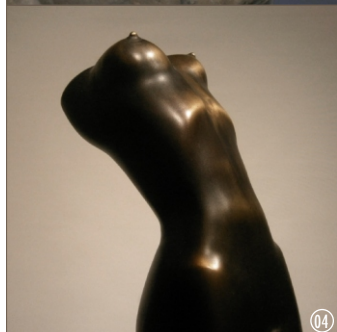
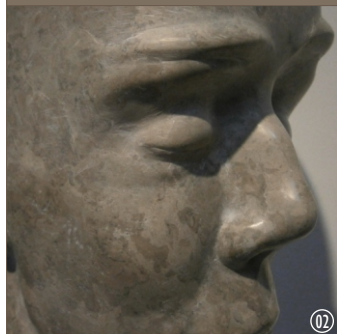
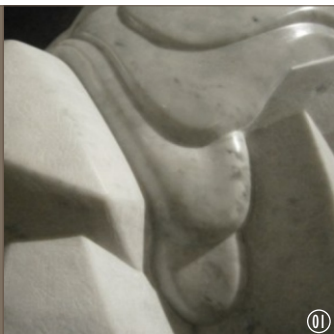
Sculptures, References and Inspirations:

www.winter-design.at

Small scale objects also available online.

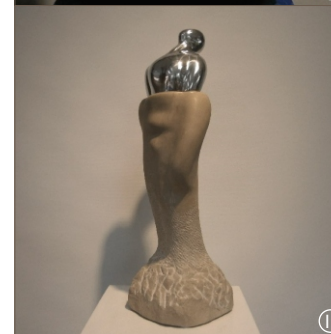
The vision: feeling space curves.
The connection of the space curves
gives the shape.
The sculptor's passion
calls it into being.

RW



Sculptures
Statuary
Reliefs

■
Stone Metal Wood



Award-Design
Commissional Work
Cast Models
■
Unique Items
Small Batch Series



ATELIER 

www.winter-design.at

ATELIER 

01. Relation #1, Marble, L65 cm 02. Head (Mr. Cool), Limestone, H55 cm 03. Recollection, Aluminium, H265 cm 04. Pride, Bronze, H103 cm 05. Touch #2, Wood, H190 cm 06. Pride, Limestone, H87 cm
07. Trickled Stone, Limestone, H61 cm 08. Head, slim, female, Limestone, H70 cm 09. Touch #3, Wood, H123 cm 10. Connected, Marble, H53 cm 11. Head, streaming, Marble, L55 cm
12. Guardian, Limestone, H87 cm 13. Trickled Column #1, Limestone, H107 cm 14. Temptation, Marble, H76 cm 15. Inari-Fox, Sandstone, H60 cm 16. Sofa "Ringstraße, Block 53", Sandstone, B150 cm
17. Evolution, Limestone/Aluminium, H54 cm 18. Bruno-Award, Bronze, H25 cm 19. Devotion, lying, Limestone, L100 cm 20. Streaming body, Bronze, H43 cm 21. Cats, Limestone, H70 cm